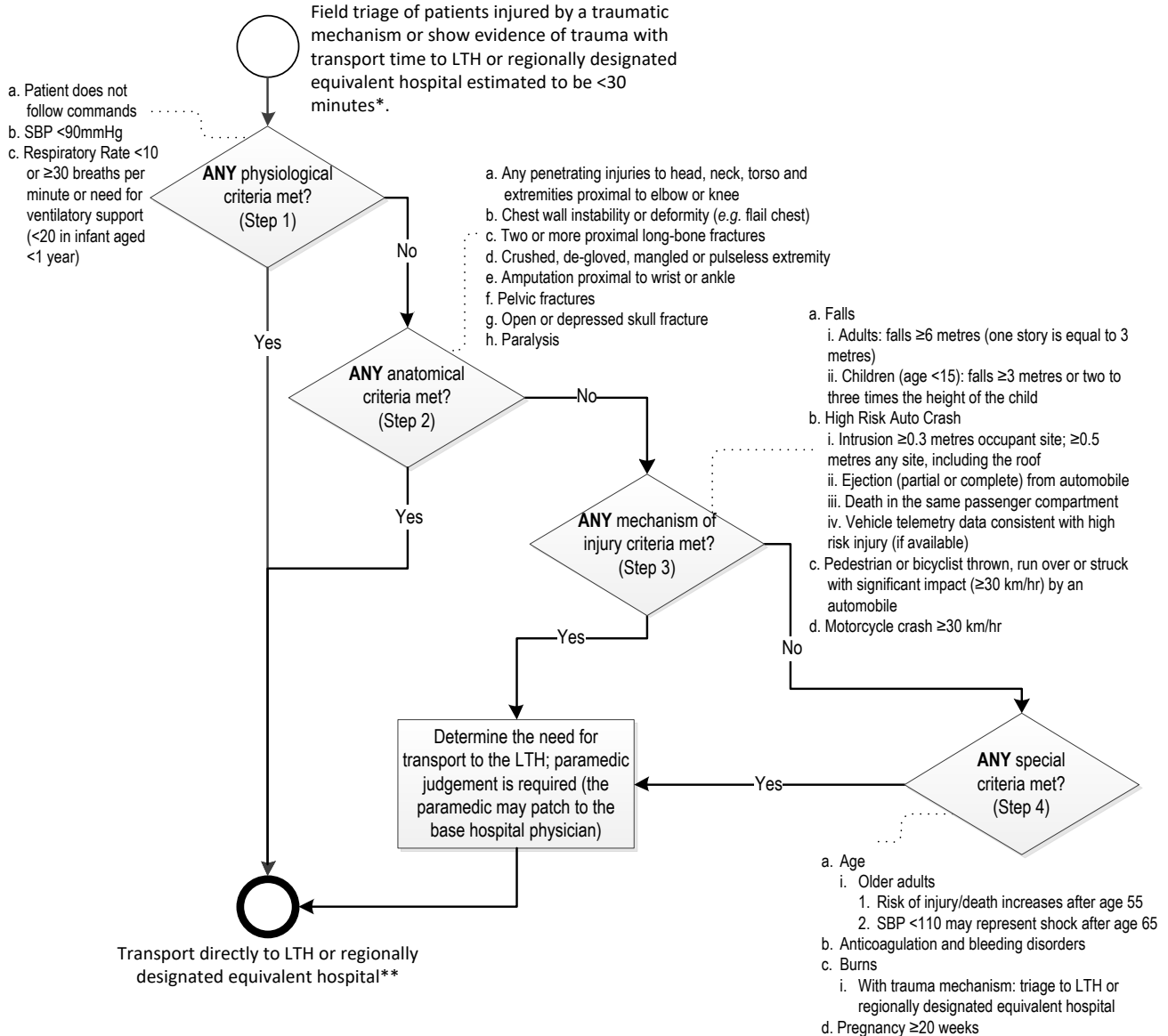


Paramedic Prompt Card for Field Trauma Triage Standard

This prompt card provides a quick reference of the *Field Trauma Triage Standard* contained in the *Basic Life Support Patient Care Standards* (BLS PCS). Please refer to the BLS PCS for the full standard.



*The 30 minute transport time may be amended to up to 60 minutes as per an ambulance service PPS, but may not exceed 60 minutes.

**If unable to secure the patient's airway or survival to the LTH or regionally designated equivalent hospital is unlikely, transport the patient to the closest ED (unless patient has penetrating trauma to the torso or head/neck). Consider the Trauma TOR as per the ALS PCS.